



Proxables BV
Keulsveld 17
4705RS Roosendaal tel.: 0031631010819 email: Ton@email.com



Lightweight Flexible Photovoltaic Module Project Series

APPLICATIONS

building integrated and building applied PV
(rooftop, facade)
Outdoor & mobile applications

100 W_p – 335 W_p POWER RANGE

Positive power tolerance 0/+5W

HIGH RELIABILITY

IEC 61730
IEC 61215
IEC 62804-1
IEC 61701 Salt mist corrosion test
IEC 62716 Ammonia corrosion test
EN 13501-5 B_{ROOF}(t1) „Flying sparks test“

WARRANTY

10-year product warranty
25-year linear performance warranty

For building integrated and
building applied installations



Ultra-lightweight

Weight as low as 2.5 kg
per square meter.



Patented design

A patented design ensures that
the modules are only 2 mm thick.



Flexibility

Their flexibility ensures that
the modules conform to the
corresponding substructure.



Easily mounted with a number of assembly options

The modules can be glued, screwed, riveted, or
mounted onto the substructure using existing
eyelets.



Customer-specific and project-specific solutions

Model size, shape, and color are customizable.



High energy yield

Light-trapping effect generated
by the lenticular surface.



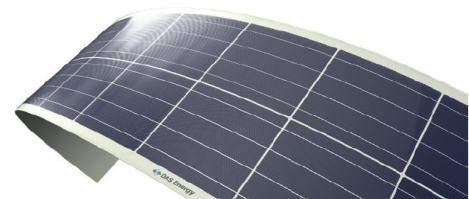
Proxables BV
 Keulsveld 17
 4705RS Roosendaal tel.: 0031631010819 email: Ton@email.com



TECHNICAL DATA			
Product	10x6 poly / mono	12x6 poly / mono	12x2 poly / mono
Number of cells	60	72	24
Dimensions "front junction box" (L x W x T)	1706 x 991 x 2 mm	2024 x 991 x 2 mm	2027 x 354 x 2 mm
Dimensions "rear junction box" (L x W x T)	1657 x 991 x 2 mm	1975 x 991 x 2 mm	1968 x 354 x 2 mm
Weight	5.7 kg	6.7 kg	2.5 kg
Solar cells	4BB polycrystalline solar cells (optional monocrystalline)		
Maximum system voltage	1000 V		
Maximum over current protection	20 A		
Front sheet	Soil-resistant ETFE-Film		
Encapsulation	Patented fibreglass-reinforced plastic, EVA		
Back sheet	High resistant PET		
Junction box	TÜV-certified (IP 67) with 3 bypass-diodes		
Cables	2 x 4 mm ² , 900 mm		
Connector	PV4S		

ELECTRIC CHARACTERISTICS							
Name	Type	Cells	Power (Wp)	Isc (A)	Voc (V)	Imp (A)	Vmp (V)
10x6	poly	60	250	8.41	37.57	8.02	31.17
10x6	mono	60	280	9.11	38.69	8.74	32.52
12x6	poly	72	300	8.41	45.08	8.02	37.40
12x6	mono	72	335	9.11	46.43	8.74	39.02
12x2	poly	24	100	8.41	15.03	8.02	12.47
12x2	mono	24	112	9.11	15.48	8.74	13.01

THERMAL CHARACTERISTICS	
Operating temperature range	-40 to 85°C
Temperature coefficient Pmpp	-0.393 %/°C
Temperature coefficient Voc	-0.310 %/°C
Temperature coefficient Isc	0.051 %/°C



Scientific Partners and Associations



©05/2017/EN/DAS Energy GmbH. Our General Terms and Conditions as well as Warranty Conditions apply. Technical changes as well as misprints in graphic or writing reserved.